



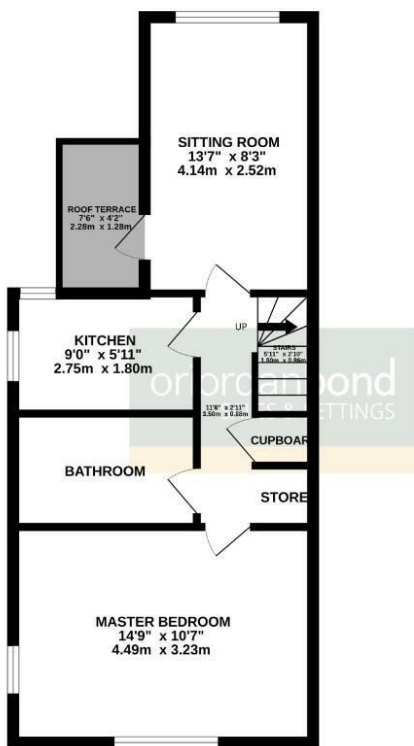
Victoria Road

Abington, Northampton

oriordanbond
SALES & LETTINGS



GROUND FLOOR
438 sq.ft. (40.7 sq.m.) approx.



TOTAL FLOOR AREA: 438 sq.ft. (40.7 sq.m.) approx.
Whilst every attempt has been made to ensure the accuracy of the floorplan contained here, measurements of doors, windows, rooms and any other items are approximate and no responsibility is taken for any error, omission or misstatement. This plan is for illustrative purposes only and should be used as such by any prospective purchaser. The services, systems and appliances shown have not been tested and no guarantee as to their operability or efficiency can be given.
Made with floorplan.co.uk

Victoria Road

Abington

NN1 5ED

OFFERS OVER £125,000

O'Riordan Bond is thrilled to offer for sale this top floor apartment with its own roof garden providing views towards St. Giles Church and beyond and also comes with its own single garage. This apartment is located within walking distance of the hospital and town centre.

The accommodation comprises entrance hall, staircase rising to the apartment, inner hall with built-in storage cupboards, sitting room with door onto the roof garden, kitchen with built-in appliances and dual aspect windows, bathroom with shower over the bath and a large double bedroom with windows to two aspects. Benefits include uPVC double glazing and gas radiator heating fired by a modern Vaillant combi boiler. (B/438/terr)

Leasehold Information: Lease Remaining - 88 years (as of 2026) / Ground Rent - £40 per annum / Service Charge - £1494 per annum

Additional information

- Council Tax Band: A
- Energy Efficiency Rating: D

Viewing

Viewing strictly by appointment – details below

Disclaimer

O'Riordan Bond Estate Agents Limited has not tested apparatus, equipment, fittings or services and so cannot verify they are in working order. The buyer is advised to obtain verification from their solicitor or surveyor.

O'Riordan Bond Abington Sales

01604 639007

abington@oriordanbond.co.uk

